



CARVEWRIGHT™

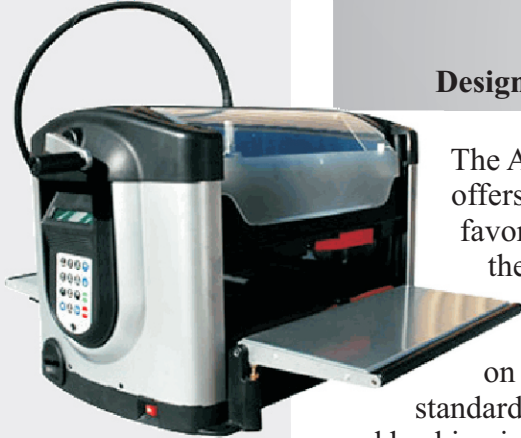
WOODWORKING SYSTEM

**PROJECT
BASIC
DIFFICULTY**

PROJECT TUTORIAL

Antique Chair Photo Frame

Designed for CarveWright™ by Michael Tyler - www.carvebuddy.com



The Antique Chair Photo Frame offers a unique way to display a favorite photo. Reminiscent of the Queen Anne style of furniture, it has a charm all its own. The frame pocket on the backside is sized for a standard 4" x 6" photo and a glass and backing insert kit.

The project uses just the 1/16" Carving Bit and the 1/8" Cutting Bit. No other bits are required.

The finished dimensions of the Antique Chair Photo Frame are about 9" wide x 14" tall x 3/4" thick.

Main items you will need:

1) The Project Files (included):

- Chair_Photo_Frame.mpc

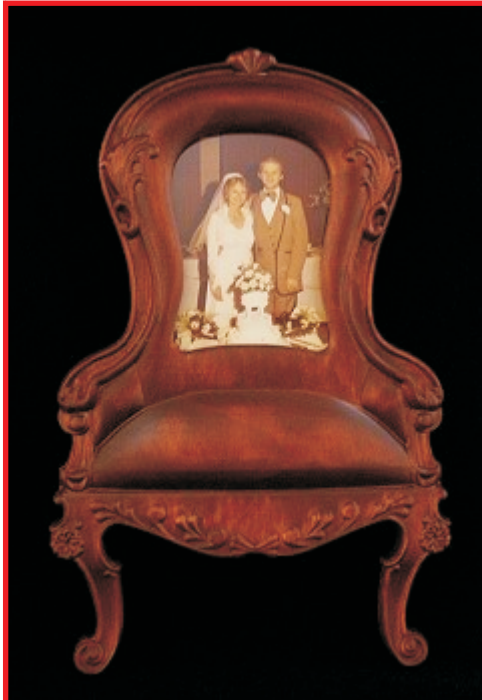
2) Boards with the following dimensions:

Chair Photo Frame: 0.75" x 11" x 22"

NOTE: Do not use boards that are smaller than specified above.

3) Sawtooth picture hanger, 4x6 glass and backing insert, inexpensive frame to scavenge turn button screws (see last page), sandpaper, wood stain and/or paint and clear finish

4) A Dremel-type rotary tool with assorted sanding wheels and bits to sand small details and speed up preparation for finishing.



Antique Chair Photo Frame

(cont.)

STEP 1

Start your Designer software and open the .mpc files. (Fig. 1a)

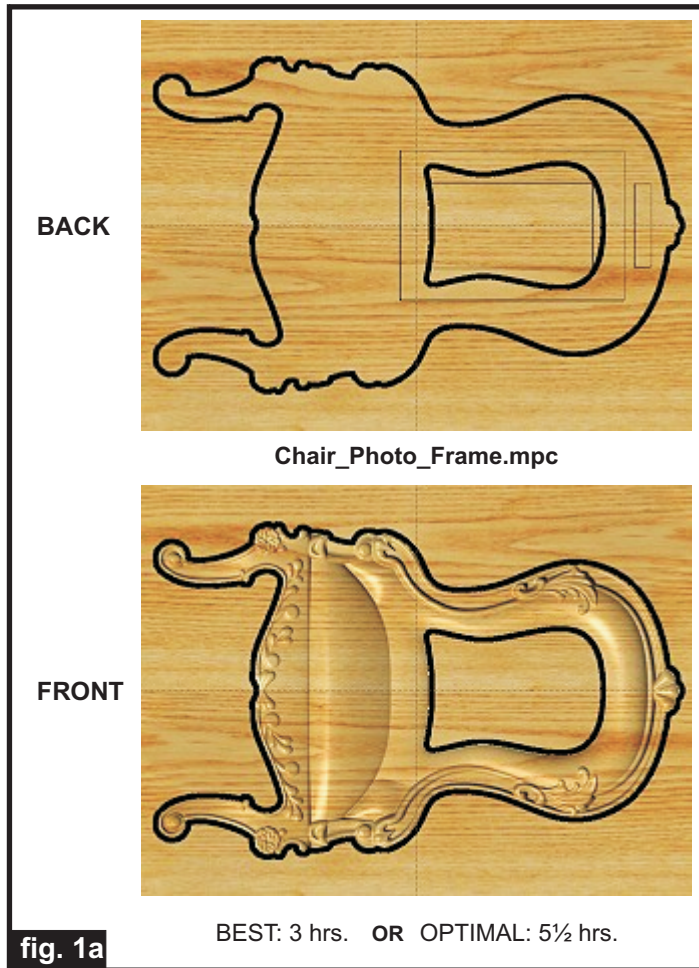


fig. 1a

All you need to do at this point is upload the project files to your memory card. (File/Upload).

During upload, you may or may not see a pop-up window with an “Auto-Jig” warning message (Fig. 1b)

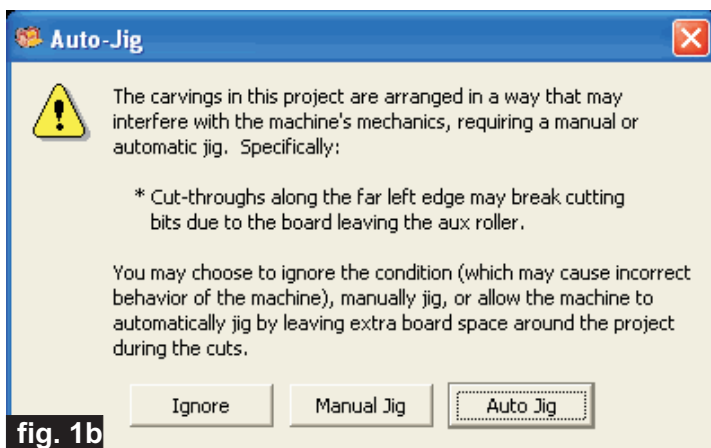


fig. 1b

If you do see the message, you may safely click on “Ignore” because the actual board will be large enough that it won’t cause any problems at all. After the project is compiled, select “Best” or “Optimal” for the File Quality setting. Click “OK” and upload the mpc project file to your memory card. Insert the card into your machine and load a board that measures the appropriate dimension specified for the particular mpc (see page 1 for board dimensions). Turn on your machine and proceed with the project setup in Step 2...

STEP 2

You will see “Project Menu” on your LCD display. Press “1” then scroll to the **Chair_Photo_Frame.mpc** project, and press the green ENTER button. This MPC is a **TWO-SIDED** carve. The machine will carve the pocket recesses on the **BACKSIDE** first. Follow the additional prompts closely....

- **Stay Under Rollers** - press 1) YES
- **Press Enter to Proceed: Board (BACK)** Press ENTER
- **DO NOT RESIZE or SCALE the projects!** If prompted, always **Keep the Original Size**. No scaling!
- **How to Place...** - press 1) Center
- **Cut Board to Size?** - press 2) NO
- **Select Vector Bit: 1/8" Cutting** - Press ENTER. The machine will move the bit holder to the center.
- **Load Bit: 1/8" Cutting** - Insert your 1/8" cutting bit, then press the green ENTER button. The recessed pocket carves will be performed.
- **After it is done with the back, you will be prompted to “Please Flip Piece”.** Raise the head of the machine to remove and flip the board.
- **Please Load Piece: Board** - Brush off the board, and flip the board over width-wise, top-to-bottom (**NOT** end to end! see fig. 2a). Put the board back into the machine (blank side up) and crank down the head.



fig. 2a

Flip the board over width-wise

(cont.)

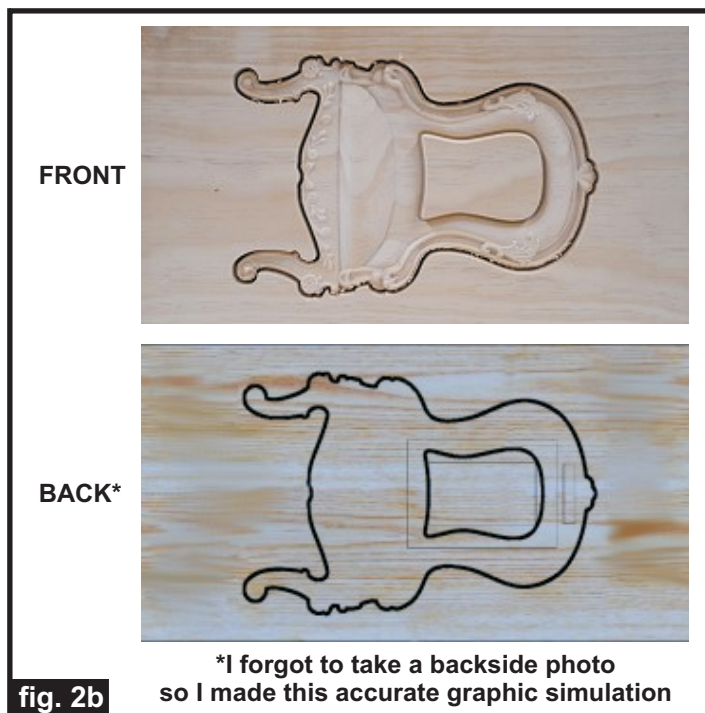
Antique Chair Photo Frame

(cont.)

STEP 2 (cont.)

- Press **ENTER** to Proceed (will measure board again)
- **Select Cutting Bit: 1/8" Cutting** - Press the green **ENTER** button. The machine will move the bit holder to the center of the machine.
- **Load Bit: 1/8" Cutting** - Just press **ENTER** - the bit is still installed in the chuck. (homes, etc.)
- **Select Carving Bit: 1/16" Carving** - Press the green **ENTER** button. (Moves to center of machine.)
- **Load Bit: 1/16" Carving** - Remove the 1/8" cutting bit, and insert your 1/16" carving bit, then press the green **ENTER** button. After homing and finding surface, the machine will begin the carving process.
- **After it is done carving, you will be prompted to load your 1/8" cutting bit.** Take out the 1/16" carving bit and insert your 1/8" cutting bit. Press the green **ENTER** button. The machine will now proceed to perform the cutouts as it moves around the component outlines. When the machine is finished, remove your board and clean your machine. Power off before removing the memory card.

Your board will look like this. (fig. 2b)



STEP 3 - Separate and Sand

Separate all the pieces from the board with a utility knife or hobby saw. Sand all the components to remove the tabs, fuzzies and undesirable tool marks. Use a Dremel-type tool with various abrasive wheels and tips to make the job go faster. (fig. 3a, 3b)



fig. 3a



fig. 3b

STEP 4 - Apply Finish

Apply stain/paint and clearcoat of your choice. Here's what I used on my Antique Photo Frame made from Select Pine (fig. 4a, 4b):

- Rust-Oleum Ultimate Stain - Traditional Cherry
- Several coats of Krylon Crystal Clear Acrylic spray

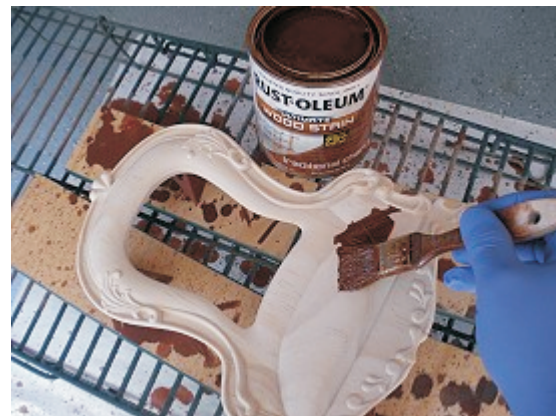


fig. 4a

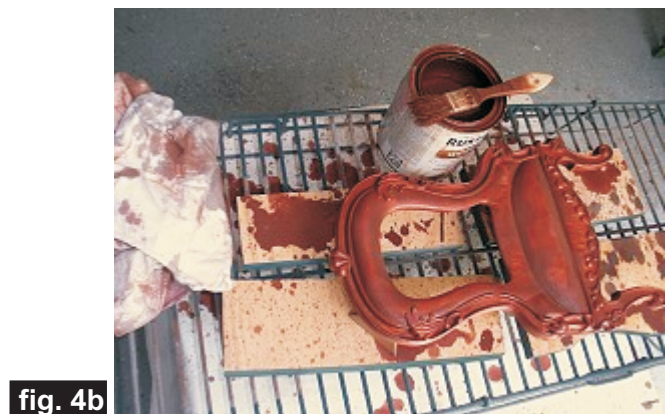


fig. 4b

Antique Chair Photo Frame

(cont.)

STEP 5 - Assembly

Install a sawtooth picture hanger. Make sure the nails will not protrude to the front side - clip them shorter if necessary. (fig. 5a)



fig. 5a

I provided a template as a “size-placement” guide for your photo. Cut out the template and lay it over a printout of your photo to “frame” the desired area. Trim the photo to fit the backside recess. (fig. 5b)



fig. 5b

Insert the glass, photo (tape photo in position, if necessary), and cardboard backing into the photo recess. (fig. 5c)



fig. 5c

Secure the backing with two or three “scavenged” turn-button screws from an inexpensive frame. (fig. 5d)



fig. 5d

IN CONCLUSION

I hope you had fun creating your Antique Photo Frame and that you'll enjoy it for many years to come. Feel free to embellish the finish. Possibilities include gilding the raised carved areas, coloring/staining the recessed areas with a contrasting shade, or even painting a fabric pattern on the “cushioned” sides, seat and backrest.

Happy Carving!

Michael



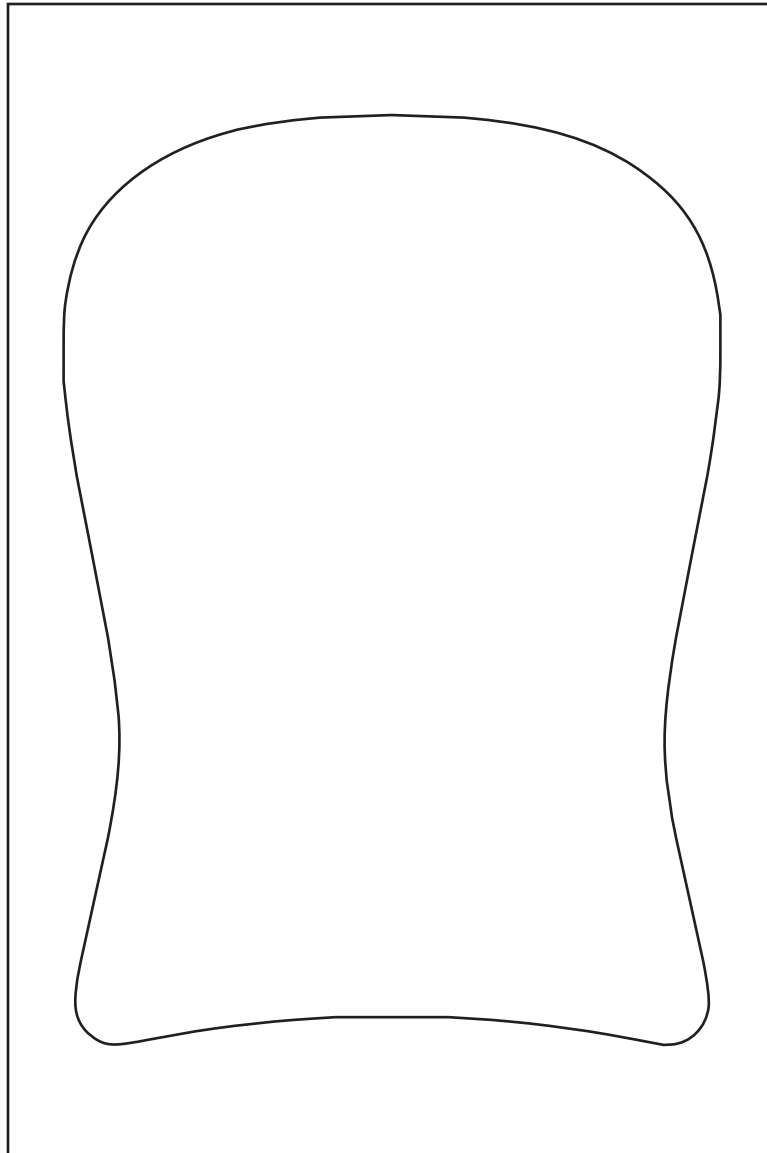


Photo Size/Framing Template

Materials Source Page

- **3M Radial Bristle Discs** from www.mcmaster.com
(stack 3 discs at a time on your rotary tool mandrel)

80-grit: part # 4494A19

220-grit: part # 4494A18



Krylon Clear Gloss Acrylic
from WalMart™

Miscellaneous Items Purchased at Michael's Arts & Crafts™

- Sawtooth Picture Hangers
- 4x6 Glass and Backing photo insert Kit (cost \$2.99 at the time of this writing)
- Inexpensive frame to scavenge the turn button screws from (cost \$1.99 at the time of this writing)



"Scavenge" the turn
button screw holders

NOTE: You may be able to find a frame that
has BOTH the glass/backing and the turn button screws.
If so, you won't need to purchase the insert kit.



Miscellaneous Items Purchased at Lowes™

- Rust-Oleum Ultimate Stain - Traditional Cherry
- Disposable Brushes and Paint Rags

Additional Resources

RESOURCES...

There are numerous resources for the CarveWright/CompuCarve owner to make their experience with these machines much more enjoyable.

Every owner should join the CarveWright User Forum (<http://forum.carviewright.com/forum.php>) where fellow users share their experiences and knowledge with these machines on a daily basis. It is a FREE service that you will surely appreciate. A handy Search Feature helps you find answers to any questions you may have.



The trademarks, service marks and logos (the "Trademarks") used and displayed here are registered and unregistered Trademarks of LHR and others.